



# Getting Started with Osmo Math Wizard & the Fantastic Food Trucks

Updated 11.01.2021  
Version 1.0.0



# Table of Contents

<b>Table of Contents</b>	<b>2</b>
<b>What's Included?</b>	<b>3</b>
<b>Math Wizard First-Time Setup</b>	<b>4</b>
<b>Sky Castle</b>	<b>5</b>
Unlocking Food Truck	5
Lost Your Postcard?	6
Additional Sky Castle Content	7
<b>Math Wizard and the Fantastic Food Truck</b>	<b>8</b>
What You'll Need	9
Main Menu Navigation	9
Sky Castle: Adding Food Truck	10
Game Setup	11
Map Screen	12
Gameplay	13
Store	15
<b>Math Wizard and the Fantastic Food Truck: Carnival Crew</b>	<b>16</b>
What You'll Need	17
Main Menu Navigation	18
Game Setup	19
Map Screen	20
Gameplay	21
<b>Appendix</b>	<b>24</b>
Best Practices for Effective Osmo Detection	24
Other Questions	25

# What's Included?

## Geometric pieces

- Green Quarter Circle (5 pieces)
- Pink Semicircle (6 pieces)
- Teal Square (2 pieces)
- Lime Rectangle (4 pieces)
- Orange Isosceles Triangle (4 pieces)
- Red Scalene Right Triangle (2 pieces)
- Green Obtuse Isosceles Triangle (4 pieces)
- Teal Equilateral Triangle (4 pieces)
- Dark Blue Rhombus (2 pieces)
- Purple Trapezoid (1 pieces)



Postcard



Booklet



Playmat



Don't forget to also grab your Osmo iPad or Fire Base!

(Base not included with Math Wizard & the Fantastic Food Truck)



iPad Base



Fire Base

# Math Wizard First-Time Setup

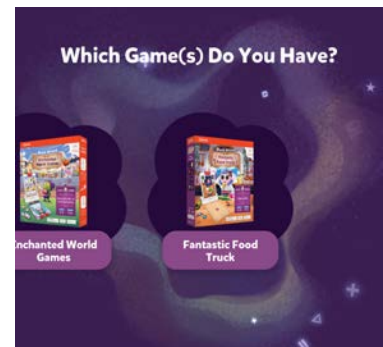
## Selecting your Games

When you launch Math Wizard for the first time, it will ask for a grown-up to do a little setup. In these few steps, you'll let Osmo know which games you own so that the Player can easily access them.

1. On the first screen, tap on **I'm a Grown-Up!** to begin setup.
2. Then, tap on **→** to continue to the next screen.
3. Now, Osmo will ask you to grab the postcard that came in your Math Wizard and the Fantastic Food Truck box. If you have it, tap on **Ok, I have it ready!** and read ahead to the "Finish Setup" Section. Otherwise, tap on **I can't find my postcard** and read on to the "Missing Postcard" section.

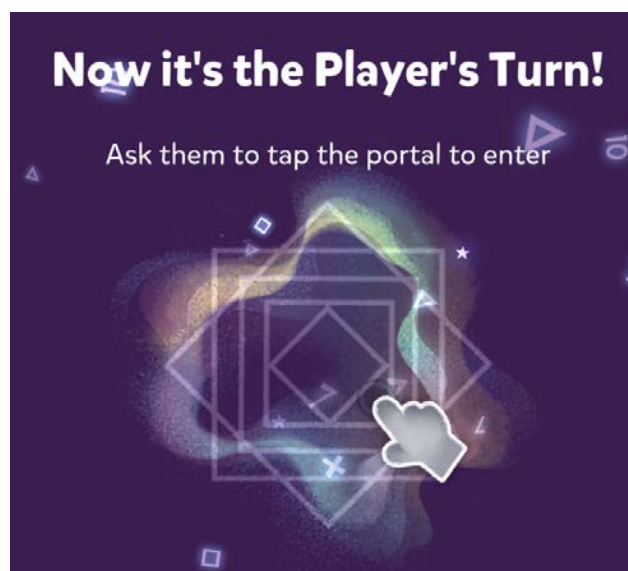
## Missing Postcard

If you lost the postcard that came in your box, don't worry! When you see a screen like this one, simply tap on the Fantastic Food Truck box (along with any other boxes for which you are missing postcards), and then hit the **→** arrow to continue.



## Finishing Setup

When you get to a screen like this one, your setup is complete! You can now pass the Osmo back to the Player and ask them to tap where the portal in the center of the screen:



# Sky Castle

## Unlocking Food Truck

### Sky Castle

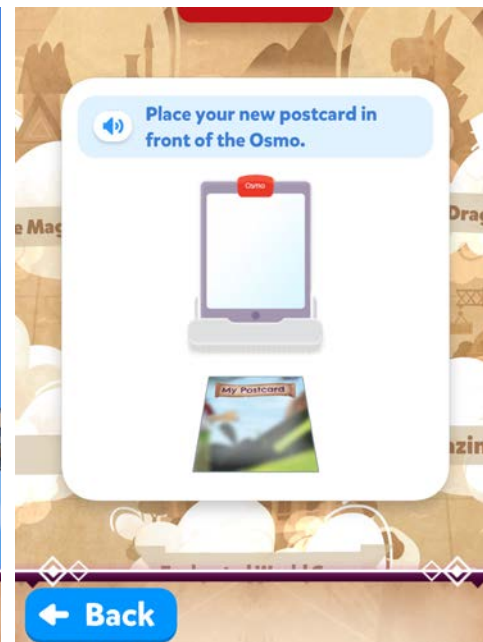
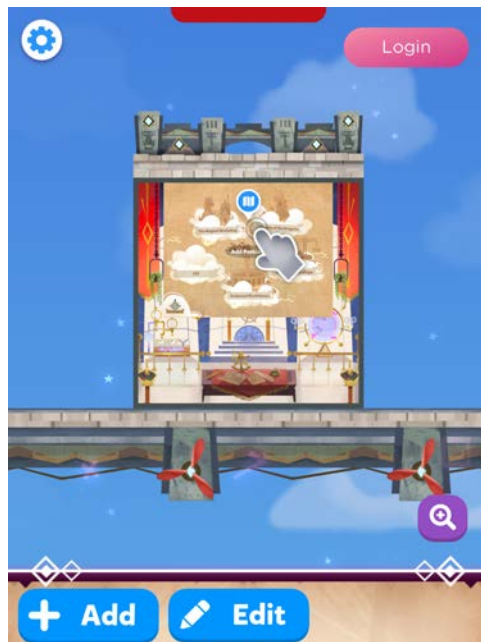
Every game you own in the Math Wizard series can be accessed through Sky Castle. Sky Castle is a home where you can place rooms that lead to games. To play games from the Fantastic Food Truck, you'll need to use your postcard to unlock them.

Once you open the app, you'll enter Sky Castle and can use your postcard to unlock games from the Fantastic Food Truck.

1. Tap on the navigation room. It's the bottom room with a large map! You can skip the next two steps if you said you're missing your postcard in the First-Time Setup steps above.
2. Next, tap **+ Add Postcard**
3. Place the Postcard in front of your device as pictured.





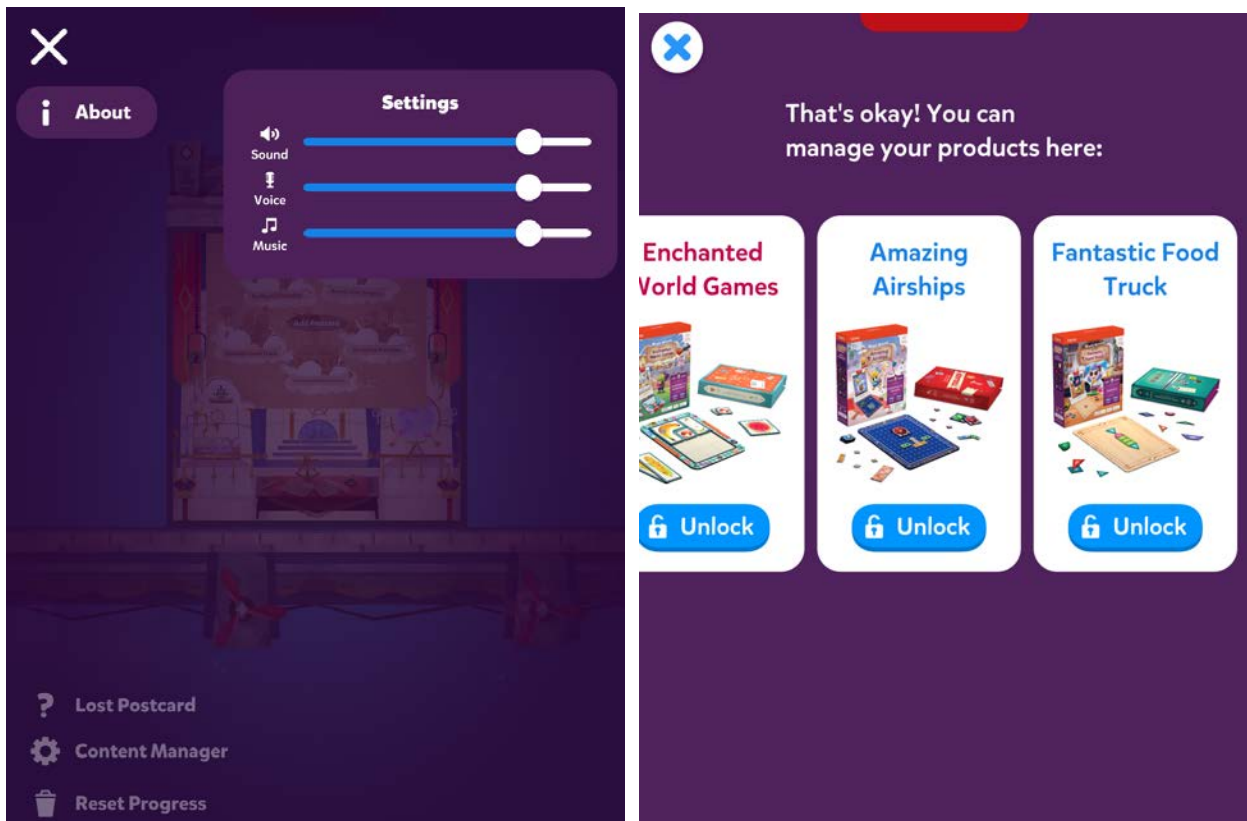
You've now added the Fantastic Food Truck to your map!



# Lost Your Postcard?

If you can't find your postcard:

- In the top right of the screen in Sky Castle, tap  from Sky Castle
- Next, tap  in the bottom left
- Lastly, select “Fantastic Food Truck”



## Additional Sky Castle Content

There's lots of content to discover in the Math Wizard Sky Castle, no matter what boxes you own! To read more about the content that's available to everyone, from pets to new games, go take a look at the manual for the Math Wizard Sky Castle.



# Math Wizard and the Fantastic Food Truck



## Learning Objectives

Fantastic Food Truck focuses on learning geometric shapes and their attributes. Players will also use geometric pieces to compose complex composite shapes, which will turn into their cooking ingredients! The game is designed to engage children in spatial and geometric thinking.

## Game Objectives

The player must use their geometric pieces (also called “runegredients”) to build various ingredients to be included in their recipes.

The clients that visit the Food Truck will have different preferences on which shapes are the best to craft their delicious food choices. These preferences are optional; however, they will earn the player extra tips if followed.

These tips (or coins) can be used to purchase special ingredients for their food, upgrades for their truck, and accessories for the chefs.




## What You'll Need

Math Wizard and the Fantastic Food Truck includes multiple games, all of which are accessible via rooms in your Sky Castle. This section of the guide is specifically for the main Food Truck game.

To play Food Truck, you'll need all items from Math Wizard and the Fantastic Food Truck Box, shown [here](#).

## Main Menu Navigation

### Accessing your myOsmo Account

From either the Fantastic Food Truck Main Menu or Sky Castle, tap  (or your avatar, if you're already logged in) in the upper right corner to view the myOsmo account screen. See this [guide to myOsmo accounts and profiles](#) for more information.

### Language

The default language automatically selects based on the default language setting of your device. Fantastic Food Truck is currently offered in English (US, AU, UK, CA), Chinese (Simplified and Traditional), Japanese, French (FR, CA), German, Italian, Dutch, Swedish, Danish, Spanish, and Norwegian.


### Start Playing

Tap  to start playing Fantastic Food Truck.


### Returning to Sky Castle

Tap  to go back to Sky Castle.

### Resetting Progress

You can reset your game progress from the Fantastic Food Truck Main Menu. Tap  in the upper left corner, then tap "Reset Progress". Be careful! All progress and unlocks will be lost and reset. Note that if you want to reset your Sky Castle instead of Fantastic Food Truck, you should access settings from Sky Castle instead.

### Game Settings

You can edit the game settings from the Main Menu. Tap  in the upper left corner to access the Sound settings. There are 3 individual sliders for controlling volume: Sound FX, voice and Music.

## Sky Castle: Adding Food Truck


Once you've scanned your postcard to unlock your box, you can add the room for Food Truck and enter the game!

1. After completing the steps in "Unlocking Food Truck", you will unlock the Food Truck room.
2. In the bottom right corner, tap **+ Add** to bring up the rooms menu.
3. Next, tap the **+ Add** button on Food Truck.
4. In your Sky Castle, tap on any spot to place the room. You've added Food Truck!

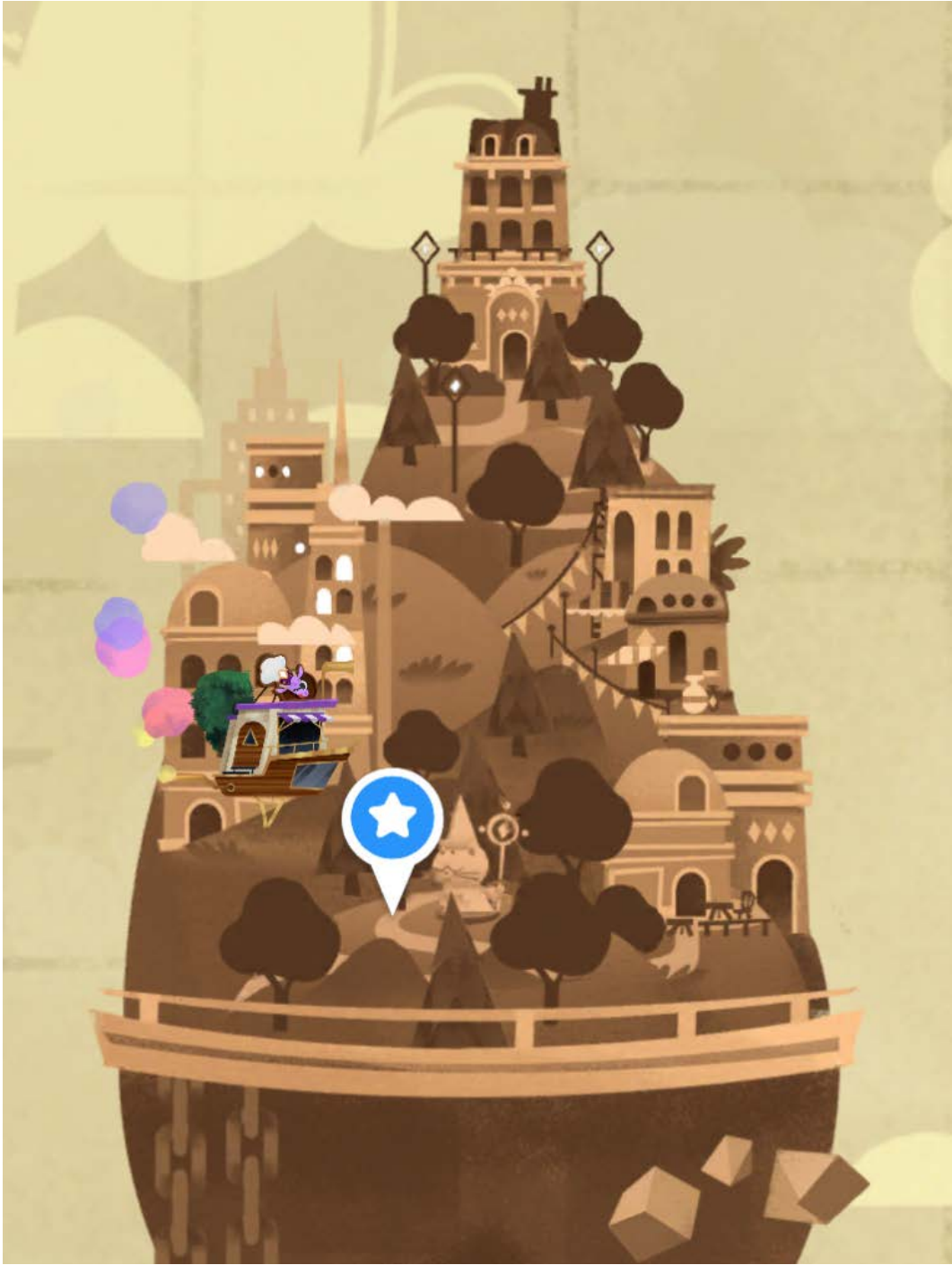


# Game Setup

To get started, grab your Osmo Base, Playmat and Geometric pieces!

1. Set up your tablet device on your Osmo Base. Make sure you have the Math Wizard game app installed and ready to play.
2. Set your play materials aside within easy reach and the game mat in front of the tablet device.
3. Tap  to start playing!

# Map Screen



The map represents Spellbarrow Market and its five districts. To enter a district, tap on the truck icon.

# Gameplay

## Customers

As the Food Truck opens for business, customers will show up to order food. The player must use their pieces to build the various ingredients to cook the dishes and earn coins.

## Days

After serving three customers (except for the first day) the day is over and the player earns coins for the dishes they successfully prepared during the day.

## Districts

After completing several days, the Food Truck can travel to a new location in Spellbarrow Market, these locations are called Districts. New districts introduce a completely new set of ingredients, dishes and customization options.

## Picking your ingredients

Drag any of the available ingredients from the inventory on the bottom of the screen into the recipe slots. Slots marked with a symbol mean whichever ingredient that goes into it will be processed with a cooking treatment. All recipe slots must have an ingredient assigned before the player can start preparing the dish.



- **Swapping ingredients:** To swap the position of two ingredients within the recipe, simply drag one of them on top of the other and they will switch places.
- **Removing an ingredient:** To remove an ingredient from a recipe, simply drag it back to the inventory on the bottom of the screen.



## Building an Ingredient

The player must create the shape of each ingredient to summon it into the preparation. Different pieces can be used to create the same shapes

- **Customer preferences:** While cooking a meal, each customer will have a favorite piece to be included in each ingredient, shown in a speech bubble. For each preferred piece that is included the player is awarded smiles, which are worth coins once the day ends.
- **Advanced preferences:** Some customers will have preferences that encompass several different pieces. Including any of such pieces in the ingredient counts towards earning smiles:


- a. “pieces with three sides” and “pieces with three vertices” (  ).
- b. “pieces with four sides” and “pieces with four vertices” (  ).



## Cooking Treatments

Treatments are fun ways to customize ingredients before adding them to the dish:

- **Cutting board:** Drag your finger across the ingredient to cut it in smaller pieces.
- **Blender:** Drag your finger over the slider on the blender to select a speed. The higher the speed, the finer the blend.
- **Roasting pan:** Hold your finger over the pan’s handle and drag it around to roast the ingredient. The gauge on the top of the screen will tell how much the ingredient is roasted.
- **Sprinkles:** Tap and hold on any of the three buttons to cover the ingredient with different colored sprinkles.
- **Sugar glaze:** Hold your finger over the sauceboat and drag it sideways to cover the ingredient with glazing. The longer you pour, the thicker the glazing.
- **Sauce dips:** Hold your finger over the ingredient and drag it into the different sauce pots. Sauces can be combined or be used to partially cover the ingredient to create different designs.
- **Panko deep fry:** Hold your finger over the ingredient and drag it sideways to cover the ingredient with breadcrumbs. Tap continue to fry it. The longer you drag the ingredient, the thicker the crust.
- **Cookie cutter:** Hold your finger over any of the molds and drag it over the ingredient, release it to create a shaped cut from the ingredient. You can take up to four cuts from the ingredient.

# Store

The store is where the player can use their earned coins to purchase customization options for their dishes and Food Truck. It is accessible by tapping on the telephone on the top right section of the kitchen screen. To buy from the store tap  on the desired item. Some items may not be available if the player doesn't have enough coins, others may be locked and can be unlocked by playing more levels and traveling to new districts.

- **Potions:** They can be applied to dishes to add extra flavor. After preparing a dish the player will be prompted to apply a potion to it. To do so simply drag it from the bottom bar into the dish and shake it.
- **Hats:** They can change the look of Betty and Reina. After purchasing a hat, tap on  place it on the characters.
- **Kitchen styles:** They can change the look of the Food Truck's kitchen. After purchasing a kitchen style, tap on  to decorate your kitchen.

# Math Wizard and the Fantastic Food Truck: Carnival Crew



## Learning Objectives

Carnival Crew is an inventory management game that focuses on identifying the position of objects in an environment, and partitioning circles and rectangles into 2 or 4 equal shares (using the terms 'halves', 'fourths', and 'quarters').

## Game Objectives

The player packs items within containers of various sizes and shapes. In the process, they figure out why some objects will fit, while others do not and how to rotate or divide items so they can be placed in the suitcase. There are multiple solutions to the same problem, giving the player choice in how they arrange the items to solve each puzzle.



## What You'll Need

Math Wizard and the Fantastic Food Truck includes several games, all of which are accessible via rooms in your Sky Castle. This section of the guide is specifically for Carnival Crew.

Carnival Crew is a digital game and does not require any hardware pieces. If you'd like, you can grab your Osmo Base to use while in Sky Castle. You can set all the other included materials aside.



# Main Menu Navigation

All features available from the Main Menu are described in the Main Menu section for Food Truck [above](#).

## Sky Castle: Adding the Arcade

Once you've unlocked the games from Math Wizard and the Amazing Airships, you can add the Arcade to play Carnival Crew!!

1. After unlocking the Fantastic Food Truck games, you will unlock new games in the Arcade.
2. In the bottom right corner, tap **+ Add** to bring up the rooms menu.
3. Next, tap the **+ Add** button on Arcade.
4. In your Sky Castle, tap on any spot to place the room. You've added the Arcade!



# Game Setup

To get started, grab your Osmo Base!

1. Set up your tablet device in your Osmo Base. Make sure you have the Math Wizard game app installed and ready to play.
2. Enter Sky Castle and make sure the Arcade is unlocked and placed on your map.
3. Tap the icon above the top left machine (with desserts on the screen and a mask on top) in the Arcade, then tap **Play** to start loading Carnival Crew.
4. Once Carnival Crew starts loading, take the device off the Osmo base. You won't need anything but your device to play!
5. Tap **Play** to start playing!



# Map Screen

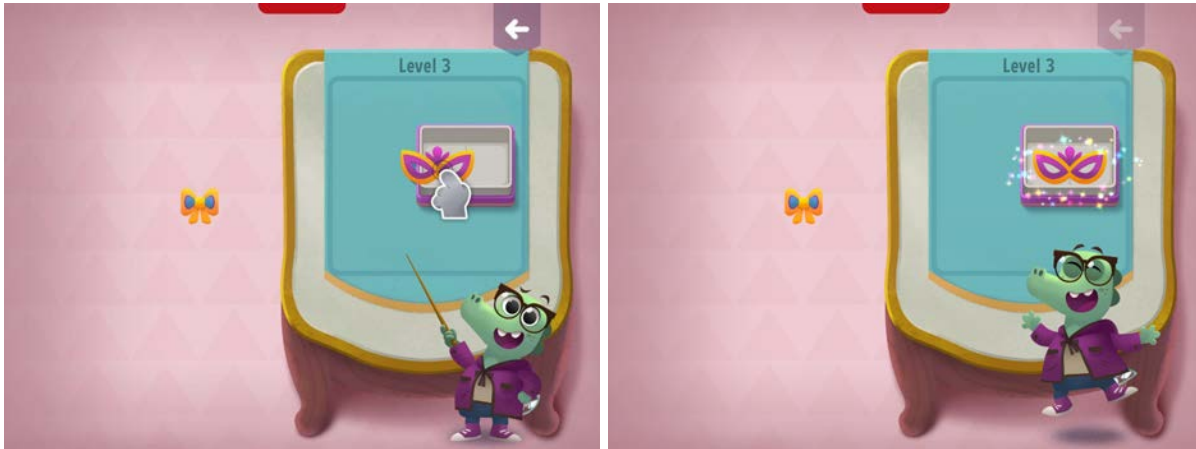


Tap on the highlighted level button 1 and you will be taken to the chapter 1 introduction screen, where the costume seller welcomes you. You have similar introduction screens for chapter 2, where you see the fortune teller and chapter 3 with the Candyman. You can always skip the introduction screen using the

**Skip** button.

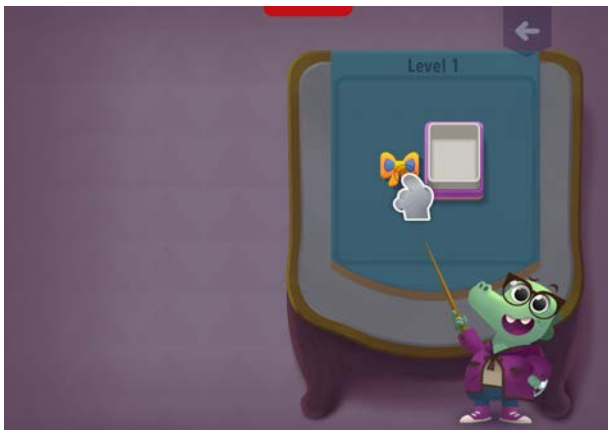
# Gameplay

Players need to drag items from the floor and arrange them in the tray on the table. At later levels they have the option to cut or rotate pieces to solve more advanced puzzles.





## Drag & drop

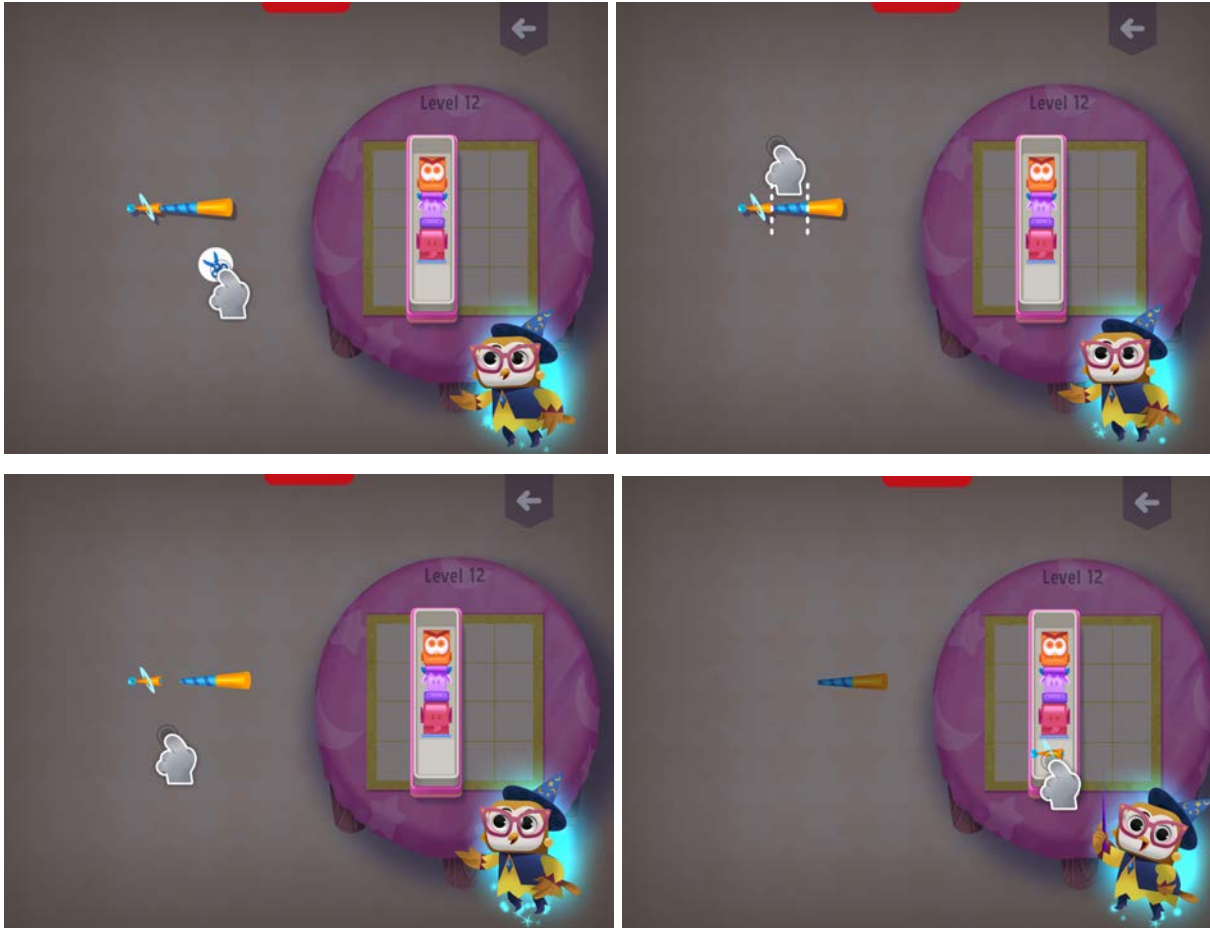
Use your finger to hold and drag items into the tray until it is filled. You can take the items back the same way and move them around to rearrange them.



## Cutting


Some items are too big to fit the tray; the  button will be displayed when these items are tapped.

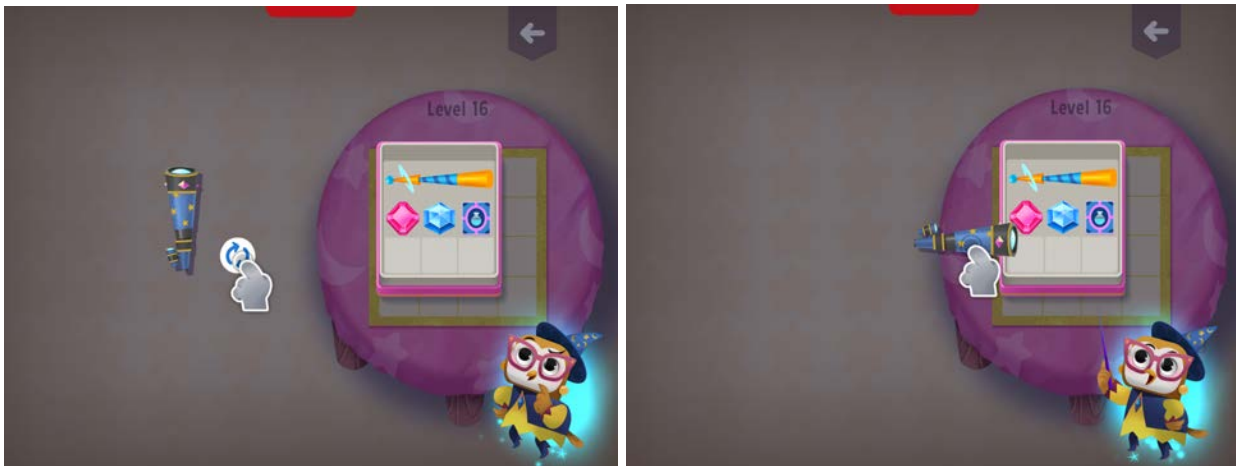
Tap on the  button to see the division lines, hold and drag your finger over the line to cut the item into smaller pieces.



## Rotating

Some items fit the tray, but must be rotated first. The  button will appear when this item is tapped.

Tap on the  button to flip the item by 90 degrees. The player can repeat this step as many times as they would like to find the best setup.



# Appendix

## Best Practices for Effective Osmo Detection



iPad Base



Fire Base

1. Keep hands and fingers away from game pieces after placing them so that Osmo can see the play space.
2. Keep the reflector placed squarely in the center so the camera can see the play space.
3. Play in a well lit room, without hard shadows.
4. Make sure the mirror in the reflector is clean.
5. Make sure you are using a device that is compatible with Osmo. Please check [this list of Osmo-compatible devices](#).
6. If you experience any issues despite this setup, please reach out to us for assistance through this form: <https://support.playosmo.com/hc/en-us/requests/new>.



## Other Questions

### What do I do if I lose a piece?

Please reach out to us for assistance through this form:

<https://support.playosmo.com/hc/en-us/requests/new>.

### Can I clean the pieces?

#### Geometric Pieces

All the pieces can be cleaned with a damp cloth. Make sure to dry them with some napkins or a dry cloth.

#### Playmat

If you accidentally spill liquids or water on the Playmat, towel dry it carefully, thoroughly and quickly to ensure no damage occurs. Pay special attention to the edges of the mat, which are more vulnerable to water damage.

Note that any kind of dry erase, wet erase, or other markers will permanently stain and ruin the mat.